

Rogers and Lough Marine Engineers Pty Ltd

“Servicing the marine industry for over 50 years”

ABN: 74 009 812 800

Company Profile

Machining /Propeller Work Shop

82 Taylor ST
Bulimba QLD 4171

PH: 07 3399 3433

FAX: 07 33993211

EMAIL: sales@rlmarine.com.au

Manager

Jamie Lough

Refit/Fabrication Work Shop

Shed 54, 36 Barku Court
Hemmant QLD 4174

Mob 0409 625 122

PH: 07 3393 6404

FAX: 07 3348 6505

EMAIL: justin@rlmarine.com.au

Managing Director

Justin Lough



1 Table of Contents

1	Table of Contents.....	2
2	Our Company	3
2.1	Overview	3
2.2	Company Structure	4
2.3	Plant and Equipment	5
3	Quality Control.....	6
3.1	Quality Poces	7
4	Propulsion Systems.....	8
5	Refit/Fabrication.....	10
5.1	Commercial Vessels Recent Projects	10
5.2	Super yachts Recent Projects	12
	Vessel: Archillies III.....	12
	Vessel: Jeremy.....	12
	Vessel: Ophilla	12
6	Health and Safety Policy.....	13
7	Environmental Policy	14
7.1	Business References.....	15



2 Our Company

2.1 Overview

Established in 1960, Rogers and Lough has been servicing the marine Industry for over 50 years. Rogers and Lough prides itself on it's commitment to delivering quality workmanship, within budget and on schedule.

Our Company aims to sustain long term growth by:

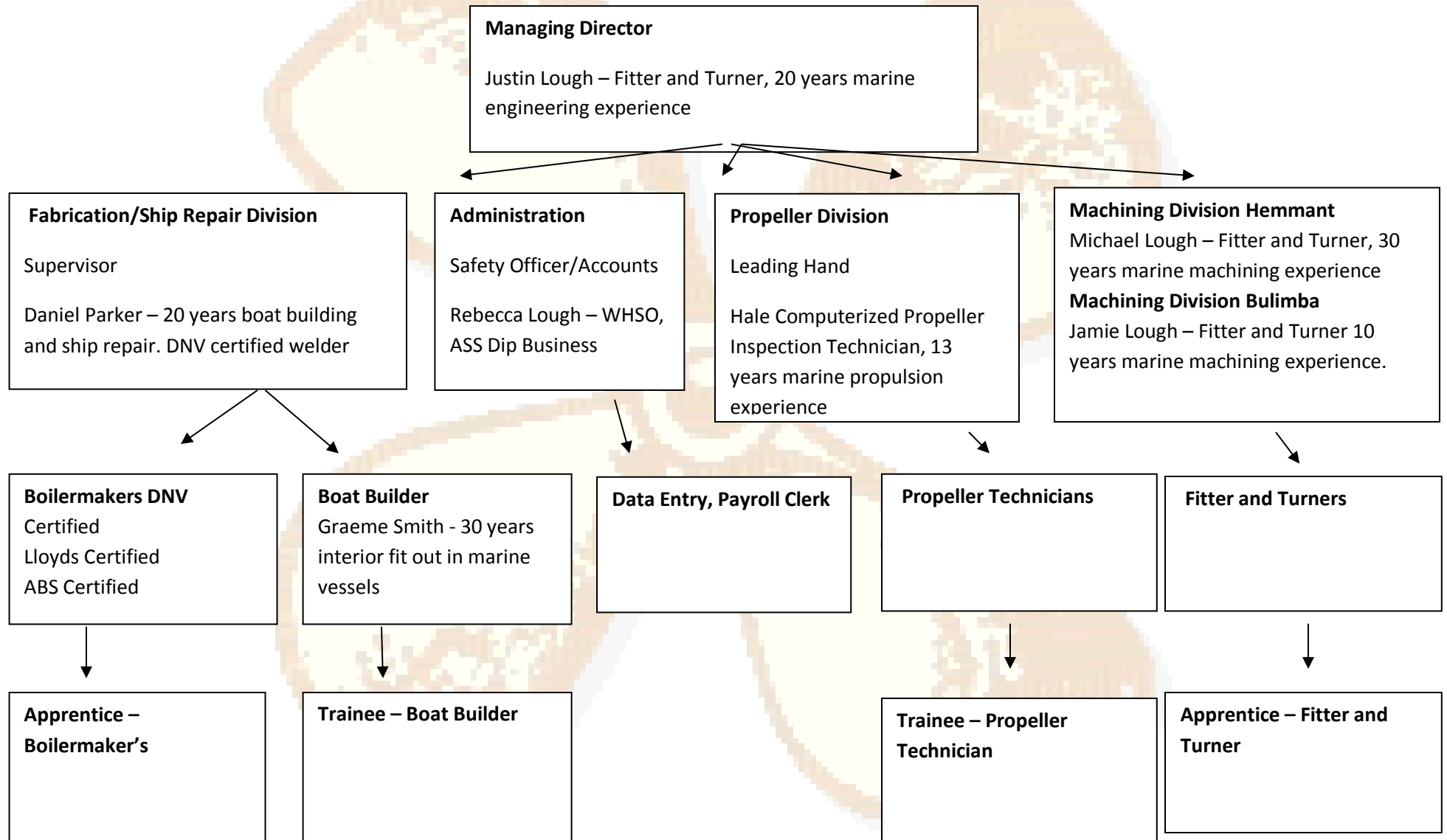
- Being committed to our customers
- Ensuring the health and safety of our team, visitors and contractors
- Investing in technology, Plant and equipment and training and developing our team.

Rogers and Lough are well known specialist in general engineering and the fabrication of complete propulsion systems. We offer Hale computerized scanning for propeller inspection, tuning and repair ensuring the maximum performance and economy of your vessel. In addition to fabrication of complete propulsion systems Rogers and Lough also supplies individual components including: Rudders, propellers, skegs, nozzles, stern tubes, PSS Seals, Countrose Bearings, White Metal Bearings, Aqua line Bearings and Bronze Bearings.

Our Bulimba manufacturing division is backed up by our service, fabrication and refit facility located at Brisbane Marine Industry Park, Hemmant. This waterfront facility provides complete fitting for your propulsion system including engine installation, alignment and commissioning.

The Hemmant premise also offers machining capabilities while specializing in refit work. This refit division offers aluminum, steel and stainless steel repairs, modifications and new fabrication. Services offered include: exhaust systems and lagging, stabilizers, welding, ship repair, wear plates, retractable duckboards, awnings, pipe fabrication, header tanks, mast replacement, header tanks, winches, prop speed, sandblasting and antifouling

2.2 Company Structure



2.3 Plant and Equipment

- Hale MRI Propeller Measurement Recording Instrument
- Band saw
- Hale MRI Propeller Measurement Recording Instrument
- Shaft straighteners
- CNC Lathe
- Various compressors
- CNC Lathe
- Press 100 T
- CNC Lathe
- Press 50 T
- Spanish Lathe, 3mtr bed, 5 ½ spindal ball
- Radial arm drill machines
- Yangiron Lathe, 1mtr bed
- Slotter
- Colchester mastiff lathe, 1.5 Mtr bed
- Pedestal drill machines
- Lathe
- Forklifts – 3 ton and 2 ton
- Sandblasting Cabinet
- Pacific Mill, 1.5 Mtr bed
- Simpson Mill, 2Mtr bed
- Feronius Welders
- Lincon 275 Welders
- Caddy Welders
- Various other power sources and welders
- Pipe bender
- Service Vehicles x 4, fully tooled, one equipped with 1000kg lift.
- Portable hydraulic jacks to 50 Ton
- 12M scissor lift in test
- Forklifts 5 Ton and 2.5 Ton with man cages
- Guiloteen
- 2 x 5 Ton Isuzu Truck and 1 x 10 Ton Isuzu Truck



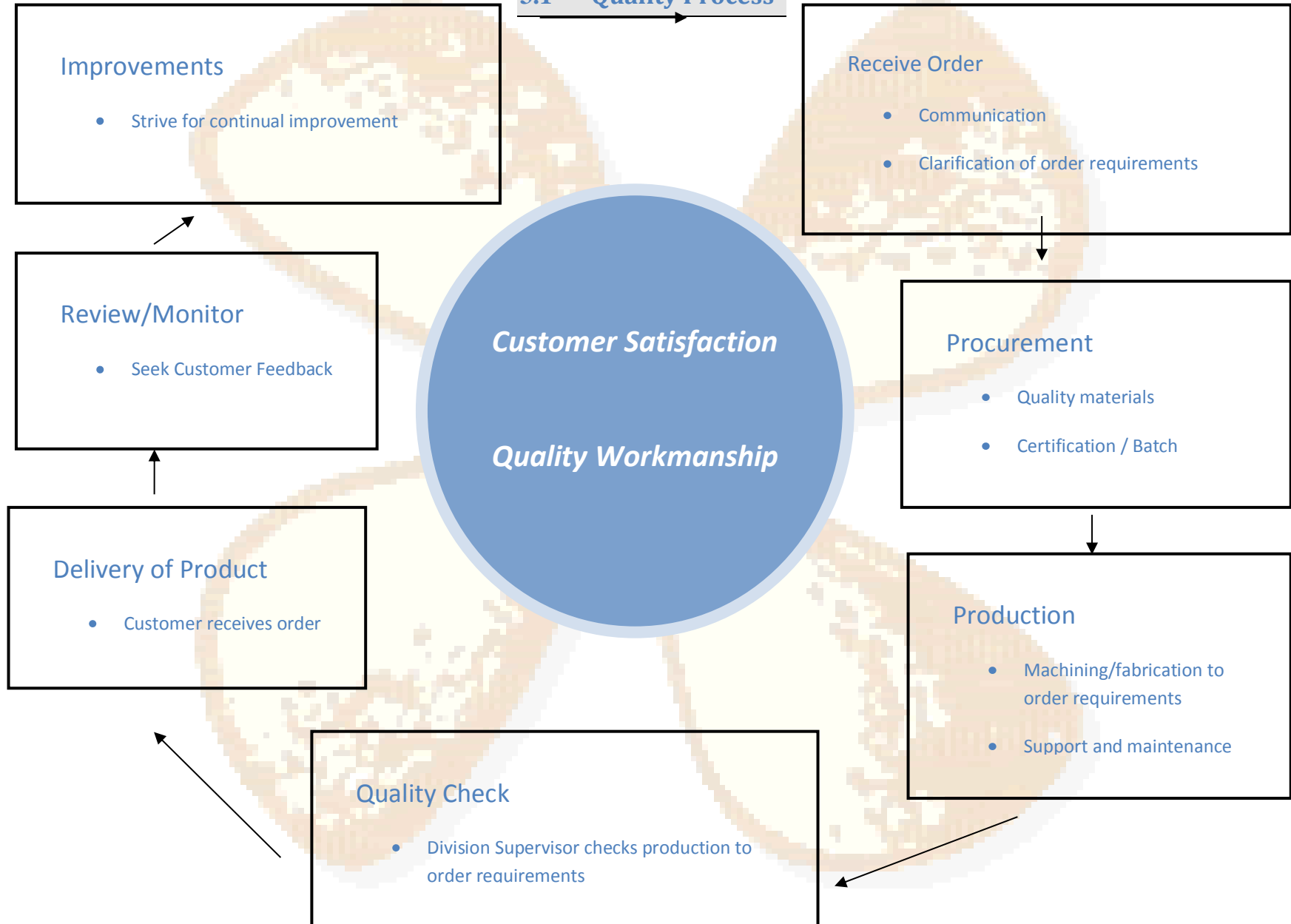
3 Quality Control

Rogers and Lough are committed to the traditional priorities of quality workmanship and customer satisfaction.

We aim to provide superior customer service through the use of quality materials and the provision of quality workmanship with reliable delivery.

The nature of our business places particular emphasis upon experience, workmanship, capability and quality. Rogers and Lough attaches major importance to completing a quality job, on time, ensuring a high degree of customer satisfaction, delivering repeat business.

3.1 Quality Process



4 Propulsion Systems

Rogers and Lough has specialized in the fabrication of complete propulsion systems for over 50 years and has an excellent reputation within all areas of the marine industry including; commercial, super yachts and pleasure vessels.

Rogers and Lough work closely with boat builders and marine designers to fabricate a propulsion system that will maximize the performance and economy of your vessel.

Rogers and Lough can fabricate complete propulsion systems or supply individual components including:

- Rudders
- Propellers
- Skegs
- Nozzles
- Stern Tubes
- Sand Seals
- PSS Seals
- Aqua line Bearings
- Count rose Bearings
- White Metal Bearings
- Bronze Bearing



Vessel Texas T – Full new Stern Gear Build



Rogers & Lough MARINE ENGINEERS

Servicing the Marine Industry for 50 Years

Rogers and Lough Marine Engineers provide a computerized design and technical calculation for the correct estimation of propeller sizes. Our computer will calculate a propeller to match the specifications of your boat. We use the Hale MRI system to ensure the highest performance for your vessel.



The Hale Propeller Measurement Recording Instrument is a sophisticated, versatile computerized three dimensional propeller measurement device.

We design propellers made from Nibral and manganese bronze.

The Hale propeller measurement recording system enables our specialized propeller technician to accurately repair or tune your propeller to minimize vibration and increase the performance of your vessel, achieving designated RPM . Often by re-tuning your propeller (adding or reducing pitch) you can obtain correct RPM for warranty purposes for your engine.

The repair and tuning of the vessel MT Botany. Propeller diameter 86".





5 Refit/Fabrication

5.1 Commercial Vessels Previous Projects

Rogers and Lough has developed a well-respected reputation for delivery of commercial refits on time and on budget. Our many commercial clients include but are not limited to:

Mipec, Bay Island Transit Systems, Stradbroke Ferries, Svitzer, Kanimbla Charters, Fodico, Pacific Tug, 1770 Great Barrier Reef Cruises and Tangalooma Wild Dolphin resort.

Projects have included: bow extensions, full new build of glass bottom boat, Z-peller installation in conjunction with Rolls Royce, new engine installations, Lancing, DNV certified ship repair, propeller repair or fabrication, Stainless Steel welding, hull and bow ship repair to name a few. The best way to see our full capabilities is to come to site and tour our work shop. Justin Lough Director is available on PH 0409625122 to arrange site tours.

Vessel: Ken Harvey, Turtle and Sea Lion (Vessel's refitted together, 14 day turn around)



Vessel Ken Harvey (Dredge)

Scope of Works: Repairs to various engine room pipe work, sea chests and valving.

Replace all deck hatches (lid configuration)

Extensive steel repairs, full replacement of bow deck molding.

Replacement of winch bearings

Inspection and cleaning of all ballast tanks (full confined space procedures)

Remove and refit zinc anodes, Spot blast and paint

Vessel: Turtle (anchor handling tug)

Scope of Works:

Removal of propeller shafts

Remove and replace propeller shaft bearings

Propeller repairs (Hale MRI computerized scanning)

Various engine room valving and pipe work serviced

Fabricate and install new stainless steel exhaust system

Spot blast and full re-paint.

Vessel: Sea Lion (Tug)

Scope of Works:

Removal of steering nozzle

Replacement of bearings

Propeller repairs (Hale MRI computerized scanning)

Replacement and servicing of sea valves.



Vessel: Koorngal (Anchor handling tug) 2009



Scope of Works:

- Complete Spot blast and paint above
- Fabrication and installation of Stainless Steel bash plate 3mtr x 1.5mtr on bow.
- Various steel hand rail and ladder repairs.
- Raw water pump servicing
- Deck soft patch removed and resealed.
- Propeller repairs. (Hale MRI computerized scanning)
- Keel cooler guards fabricated and fitted.
- Various tank inspections and cleaning (full confined space procedures)

Customer: Whan and Boxell



Vessel: Straight Shooter

Scope of Works

- Aluminum fabrication – under wing strengthen as per design drawings
- Remove rudders and propeller shafts
- Replace rudder tubes and bearings
- Replace prop shaft bearings
- Remove and refit anodes
- Install deck hatches and repair diesel fuel tanks

Customer: Bay Island Taxi's



Scope of Works

- Remove shafts propellers and rudders
- New rudder and shaft bearings
- Aluminum bow repairs
- Repaint decks and anti foul
- Customer: Svitzer

Vessel: Ballina

Scope of Works

- Remove and service 34 through hull, overboard and various valves for other systems.
- Various pipe work and fitting.
- Prop speed propulsion blades

5.2 Super yachts Recent Projects



Rogers and Lough is a member of SYBA , Super yacht Brisbane

Vessel: Archillies III



Scope of Works:

- Removal of all stern gear
- Machine new gun metal bearing liners and replace bearings
- Machine and supply new 3 ½ , 2205 stainless steel propeller shafts
- Fabricate new stainless steel rudders and rudder stocks

Vessel: Jeremy



Scope of Works:

- Re-pitch and tune propellers (Hale MRI computerized scanning)
- Re-place shafts and bearings
- Re – mounted engines and engine alignment
- Fabricated new transducer housing and installed
- Various other on site engineering tasks as requested.

Vessel: Ophilla



Scope of works:

- Remove Shafts and Rudder Gear
- New thread on rudder gear bushes and propeller shaft bearings
- Propeller balancing and Tuning



6 Health and Safety Policy

Rogers and Lough is committed to ensuring the health and safety of all its employees, visitors and contractors.

Our goal is to ensure that each and every employee, visitor and contractor returns safety home to their families at the end of each day.

This will be achieved by:

- Adhering to all relevant current legislation and being informed of legislation changes
- All incidents, accidents and near misses reported and investigated
- All risks identified, assessed and control measures implemented to eliminate or reduce potential to cause injury, as per the hierarchy of control.
- Encouraging a “Safety First” Culture amongst all team members.
- Training and Developing our Staff on Health and Safety.

SAFETY, EVERYONE, EVERYDAY



7 Environmental Policy

Rogers and Lough is committed to being a responsible corporate citizen and managing our work procedures to ensure the well being of our environment for future generations.

We will manage all our activities with concern for the environment by ensuring adherence to relevant environmental legislation, codes of practice and industry standards.

In particular we will:

- Continue to improve work procedures, sourcing of materials and energy to improve sustainability.
- Fabricate products that can be produced, transported, stored and used and disposed of safely.
- Seek ways to enhance the contribution we make to the community by improving work procedures to minimize the impact on the environment.
- Provide training and development for our team to understand work procedure and their impact on the environment.
- Communicate openly about our environmental performance.
- Require all team members and contractors working for us to comply with this Policy, relevant legislation and with industry codes of practice.

“Valuing a sustainable environment”



7.1 Business References

For Commercial References please contact Justin Lough who will provide contact details.

M/Y Jeremy

This is a letter of thanks and recognition to the crew at Rogers & Lough for their work in the course of our major refit in Brisbane. There were many substantial engineering projects thrown their way and they would work quickly and whatever hours were required to finish the projects on or before schedule and would go to whatever lengths required assuring a high quality result.
Henning Heinemann Master, M/Y Jeremy 20/03/2010



Sir I really wish to convey our sincere appreciation for the superb service which you continue to provide to my skipper, Darryn Muldoon at the Gold Coast, in regard to our vessel Reefrunner. You supplied two new shafts last year to the vessel and it has only recently really been sailed around the Bay area, but the skipper informs me that whenever he has contacted your firm, about a couple of things like stuffing boxes , and shaft balancing etc, you have been there on the spot, and ready to do whatever, whenever.. and we have had no such response from other marine engineers, locally that worked on the vessel, quite the opposite in fact, and we have been "ripped off" by them. Please be aware that your reliability and excellent service is being



discussed and your firm will hopefully reap the benefits ten hundred fold, of what you do for us and our boat, we may be here in the middle east but we depend on honest, reliable and TRUSTWORTHY people such as yourself,while we are away and you have proved that you do, indeed look after the customer even after the job has been done.

Kind regards Royd Kennedy October 2,2009

I just want to thank you so much for your prompt service. I was beside myself, as I had bookings paid for all this week etc .Can you make a note of things that needed doing so when I get it serviced about March

Karien Brownlee-Smith September 22, 2009



Rogers & Lough

MARINE ENGINEERS

Servicing the Marine Industry for 50 Years

22/4/2010

To Whom It May Concern,

I Mr. John Gilbert from J. S. Gilbert Fabrications, who has been a preferred contractor to Defense Maritime Services for the past 37 years, would like to provide the following business reference for Rogers and Lough Marine Engineers.

I have used the services of Rogers and Lough for 37 years. They have performed the majority of our machining work and marine installation. In the past two years I have personally witnessed Rogers and Lough repair and fabrication capabilities in the commercial field. I have found their workmanship to be of a high standard, delivering projects on time e.g. Major refits for Port of Brisbane Corporation.

I would have no hesitation in recommending them for any future projects either machining or fabrication/refit work.

Kind Regards

John Gilbert